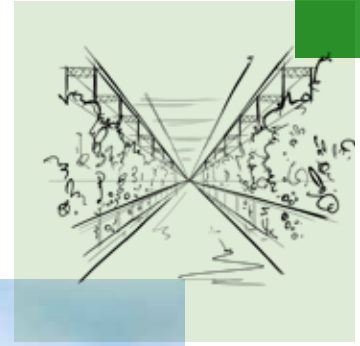


Grodan AO Plug

Product data sheet



Grodan plugs and blocks are known for their homogeneity and reliability. Grodan plugs will provide a uniform germination and a high success rate. The shape and firmness of the plugs are of a quality that makes processing significantly easier, whether that processing is mechanical or manual. Every plug has a uniform density, firmness and fibrous structure. This means that distribution of water, nutrients and pH-value is also uniform,

which has a beneficial effect on germination results and initial crop development.

Grodan has many different AO plugs in various sizes to meet your needs. Each plug has been developed to work ideally with a specific application or crop. To guide you in selecting the best plug for your application, consult the following table.

Item	Description	Dimensions	Quantity	Options
Grodan AO Plugs	<ul style="list-style-type: none"> • Square size plugs connected to each other at the top of the plug forming a sheet fitting a 10/20 tray • Plugs have a tapered bottom, for improved transplanting • Ideal plug for the growth of lettuce, leafy greens and herbs in hydroponic systems • Great to use for germinating any seeds in or starting your cuttings in 	<ul style="list-style-type: none"> • AO 25/40- 25*25*40 mm • AO 36/40-36*36*40 mm • AO 50/40-50*50*40 mm 	<ul style="list-style-type: none"> • AO 25/40, 200 plugs/ sheet, 6000 plugs/carton • AO 36/40, 98 plugs/ sheet, 2940 plugs/carton • AO 50/40, 50 plugs/ sheet, 1500 plugs/carton 	<ul style="list-style-type: none"> • No holes • 10/10 seedhole (10 mm diameter, 10 mm deep) • Ask your Account Manager about other seedhole sizes • Other height options of plug possible • Plugs loose filled into tray (SBS)

Grodan

Industrieweg 15
6065 JG Roermond, NL
Tel: +31 (0)475 35 35 35
www.grodan.com

Our information is compiled with the greatest possible care and according to the latest technological developments, however this information is non-binding at all times – July 2020 Grodan is part of the ROCKWOOL Group